



Monet[®] Water & Ice



DMI  
Water & Ice

130 | 10

**Enjoy 130 lbs. of Chewable Nugget Ice
per day with a 10 lb. Ice Storage Bin**

Ice for Everyone

Our DMI model offers chewable nugget ice alongside filtered hot and ambient water in a cooler-sized format, so you can enjoy soft, chewable ice without having to install a clunky commercial ice machine.

Designed with You in Mind

At Monet Water and Ice we believe that personal hydration products should reflect the people that use them, and the beauty, efficiency, and ease of use we all desire.

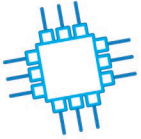
A Better Way to Hydrate

Monet's bottleless dispensers provide greater hygiene and increased sustainability compared to bottled options. The latest filtration and LED UV technologies provide a continuous supply of clean fresh tasting water without the need for bulky 5-gallon or plastic single-use bottles.

monetcoolers.com



Effortless
Capacitive touch icons offer intuitive effortless dispensing.



Advanced
Internal microprocessor controls and monitors system functions.



Smart
LCD Smart screen displays messages, system status, and service alerts.



Accommodating
Extra-large 12-inch dispense area makes refilling even the largest containers a breeze.



Refreshing
Advanced reverse osmosis and multi-stage carbon filtration deliver a continuous supply of fresh, clean drinking water and ice.



Clean
In-tank LED UV technology, anti-microbial surfaces, and no-touch filter changes keep the system clean inside and out.

130
10

130 lbs. of Chewable Nugget Ice per day with 10 lbs. of Ice Storage.

DMI 
Water & Ice
monetcoolers.com



Shown with optional 8.5" riser.