



DMXL

5 Gallons of Cold Water on Tap

Dynamic Dispense™ Automatically increases flow rate from 1.5 to 4.25 liters per minute.

When You Need a Lot of Cold Water...and You Need it Fast!

DMXL's extra large cold water reservoir gives you 5-gallons of clean, cold drinking water. Dynamic Dispense™ automatically increases dispense speed from 1.5 to 4.25 liters per minute for rapid refilling of your favorite container.

Designed with You in Mind

At Monet Water and Ice we believe that personal hydration products should reflect the people that use them, and the beauty, efficiency, and ease of use we all desire.

A Better Way to Hydrate

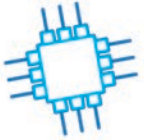
Monet's bottleless dispensers provide greater hygiene and increased sustainability compared to bottled options. The latest filtration and LED UV technologies provide a continuous supply of clean fresh tasting water without the need for bulky 5-gallon or plastic single-use bottles.

monetcoolers.com



Effortless

Capacitive touch icons offer intuitive effortless dispensing.



Advanced

Internal microprocessor controls and monitors system functions.



Dynamic Dispense™

Dispense volume increases automatically from 1.5 to 4.25 liters per minute for rapid filling of large containers.



Accommodating

The extra-large 12-inch dispense area makes refilling even the largest containers a breeze.



Refreshing

Advanced reverse osmosis and multi-stage filtration deliver a continuous fresh, clean drinking water.



Clean

In-tank LED UV, anti-microbial surfaces, and no-touch filter changes keep the system clean inside and out.



5 Gallons of Cold Water

Extra Large Cold Reservoir to meet the most demanding hydration needs.



monetcoolers.com



Shown with optional 8.5" riser.